



**OUTBACK
SLEEPERS
VICTORIA**

PRODUCT RANGE



Adding distinction to **Your** landscape design





LONSDALE



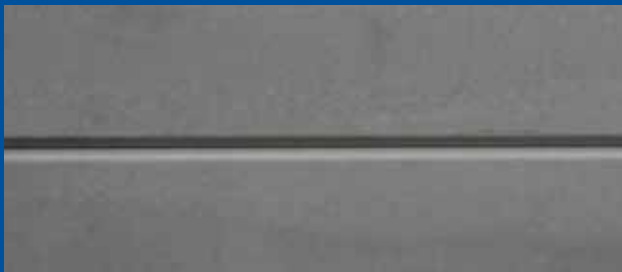
HAMPTON



BRIGHTON



COVE



BLACKWOOD



MCLAREN



CARRUM



STIRLING



ASHWOOD



KENSINGTON



ELWOOD



SORRENTO



BRIGHTON



COVE



CARRUM



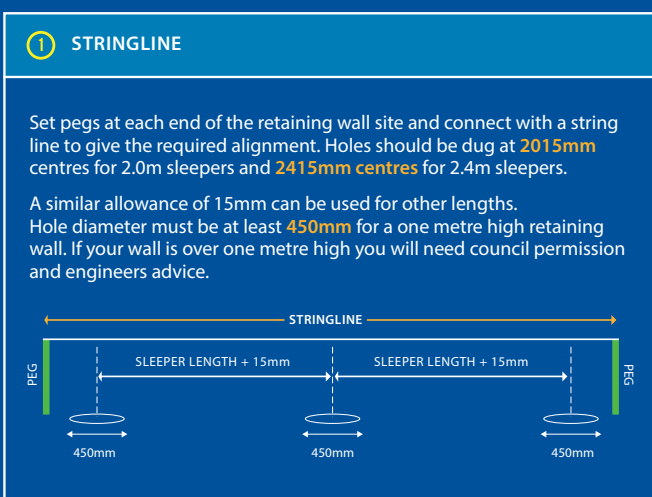
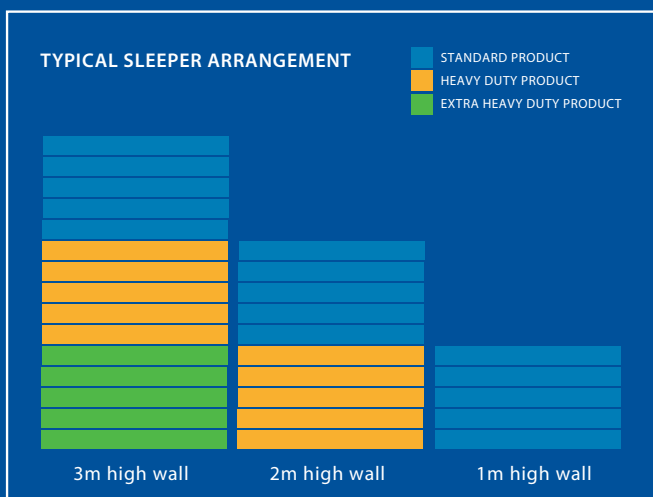
STIRLING



ELWOOD



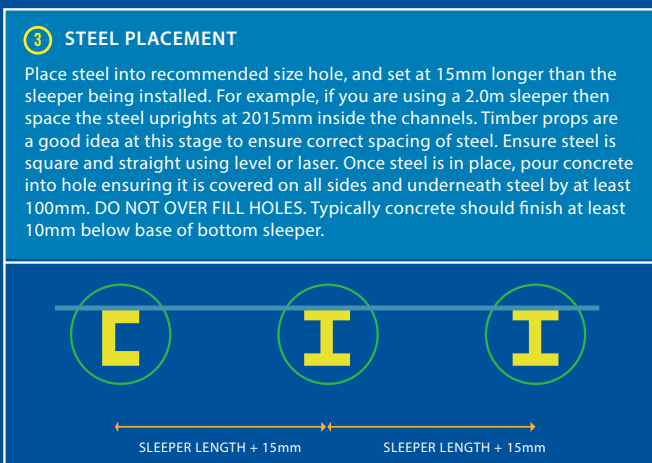
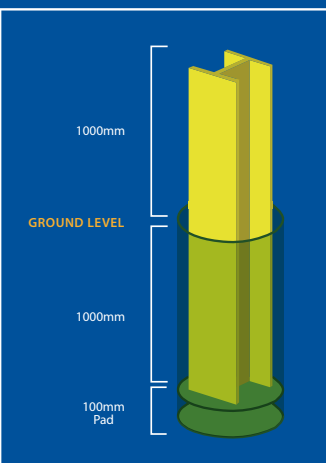
SORRENTO



2 POST HOLES

The post holes for a typical 1.0m high wall must be dug at minimum **1100mm** deep, and **450mm** in diameter.

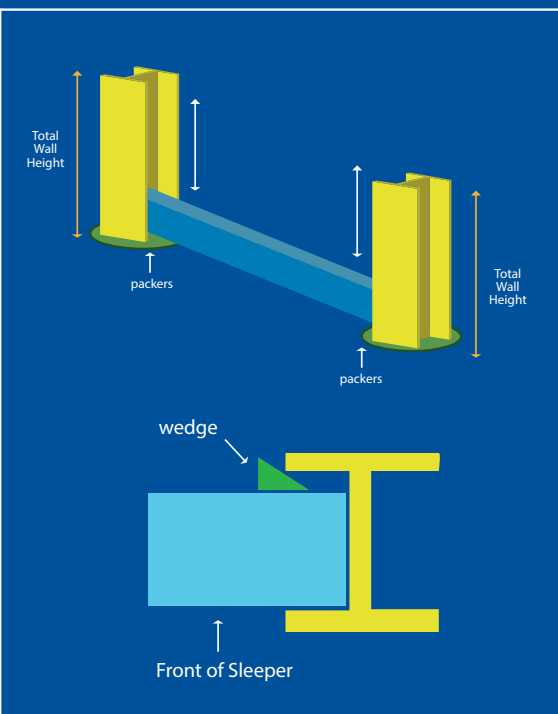
For higher walls, and where permits and council regulations apply, holes will typically be larger, please check with relevant authorities.



4 SLEEPERS

After concrete has cured, place first sleeper between steel posts.

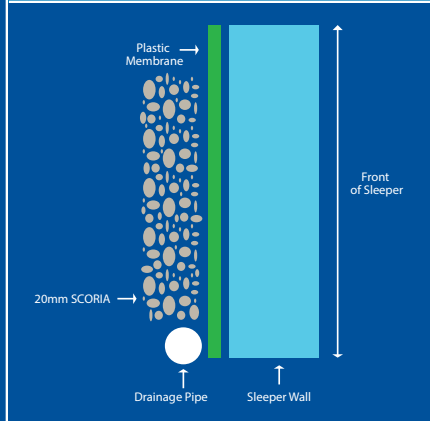
Use packing to adjust level, ensuring each layer is the same distance down from top of steel posts. It is good practice to insert wedges behind each sleeper to guarantee each is held to the front of the steel post.



5 DRAINAGE

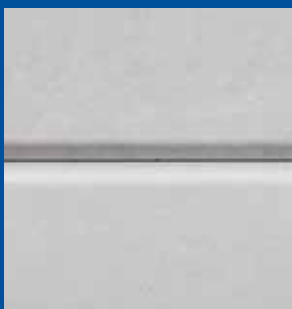
Once sleepers have been installed, place plastic membrane behind wall and slotted drain along length running to a discharge point. Cover drain and backfill with 20mm scoria up the height of the wall. Ensure there is no compaction behind wall to a distance of 75% of wall height.

Example, if your wall is 800mm high, then no compaction within 600mm of back edge of wall.



Note: Please ensure that during installation no equipment is driven over the wall backfill within 75% of the wall height. Compaction if any, within this area should be with non vibrating hand equipment weighing no more than 500kg per square metre of footprint. If greater compaction is required please obtain engineering advice. Wall designs shown are for 'typical' soil conditions. Calculations are available on our website. For walls over 1 metre you should seek independent engineering advice based on your specific site conditions.

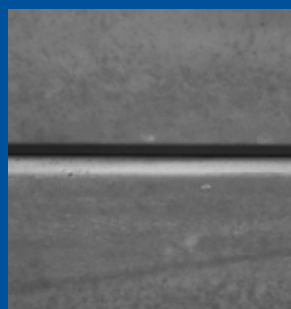
- ✓ Designed for quick installation
- ✓ Engineered for wall heights in excess of 4.0m
- ✓ 2.0m wide and equal to 4 sleepers in height
- ✓ Superior strength, with extra reo bar configuration
- ✓ Used with sleepers to achieve most intermediate wall heights
- ✓ Swift Ligs for no fuss installation



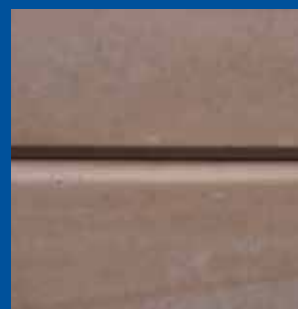
LONSDALE



BRIGHTON



BLACKWOOD



CARRUM

HEIGHT OF WALL	HD SLEEPER 2000x200x-90mm 2 x N10	PANEL A+ 2000x800x-100mm 4xN16/2xN10	PANEL B+ 2000x800x-120mm 4xN16/2xN10	PANEL C+ 2000x800x-150mm 6xN16/2xN10
800mm	0	1	N/A	N/A
1000mm	1	1	N/A	N/A
1200mm	2	1	N/A	N/A
1400mm	3	1	N/A	N/A
1600mm	0	2	N/A	N/A
1800mm	1	2	N/A	N/A
2000mm	2	2	N/A	N/A
2200mm	3	2	N/A	N/A
2400mm	0	2	1	N/A
2600mm	1	2	1	N/A
2800mm	2	2	1	N/A
3000mm	3	2	1	N/A
3200mm	0	2	2	N/A
3400mm	1	2	2	N/A
3600mm	2	2	2	N/A
3800mm	3	2	2	1
4000mm	0	2	2	1
4200mm	1	2	2	1
4400mm	2	2	2	1
4600mm	3	2	2	1

SLEEPERS PLACED ON TOP OF WALL



SLEEPER GRAB

- ✓ Efficiently install sleepers with minimal effort
- ✓ Safe handling with reduced fatigue and injury
- ✓ Available for hire or purchase
- ✓ Massively reduced labour costs
- ✓ Fits most machinery with 350kg load capacity

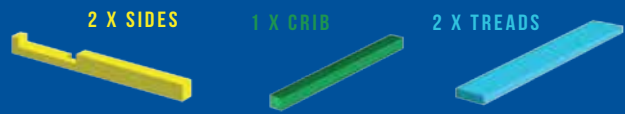


- ✓ Create steps without need for formwork and concrete construction
- ✓ Match your retaining wall to steps for uniformity
- ✓ Available in 3 widths for any situation
- ✓ Simple installation and structurally sound

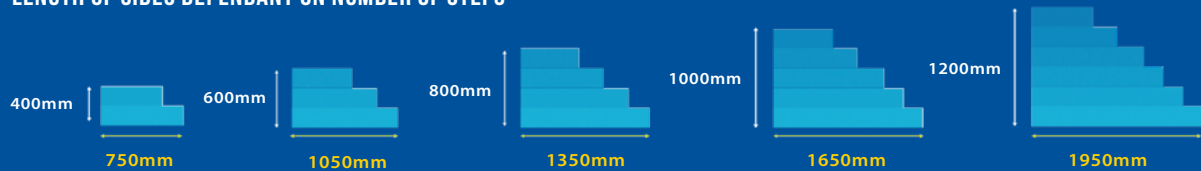


COMPONENTS PER LAYER.

Step kits can be made up to six layers high and are available in 1.0m, 1.8m & 2.2m widths.



LENGTH OF SIDES DEPENDANT ON NUMBER OF STEPS



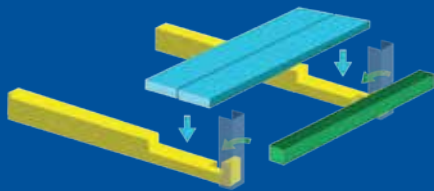
STEP WIDTH + 200mm = OPENING WIDTH

- 1.0m + 200mm = 1.2m
- 1.8M + 200mm = 2.0m
- 2.2m + 200mm = 2.4m

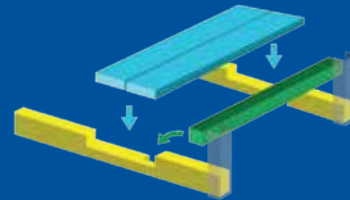


INSTALLATION OF A 600MM STEP KIT.

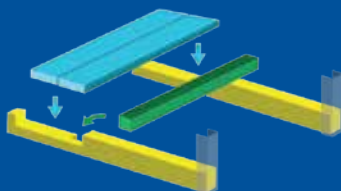
- 1 Set the first layer into 125mm channels. Cut the crib so that it fits into the slots in the sides. Place the treads. A concrete footing may be required under the rear sides. Back fill under the steps.



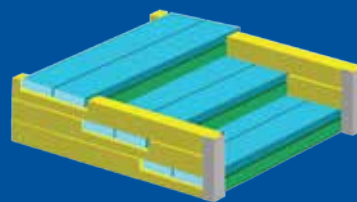
- 2 Set the second layer into 125mm channels. Cut the crib so that it fits into the slots in the sides. Place the treads. Back fill under the steps.



- 3 Repeat instructions 1 & 2 until all step components are finished.



- 4 3 step assembly shown.



STEEL

- ✓ 120UB , suitable for wall heights up to 1.0m
- ✓ Hot dipped galvanized for longer life span
- ✓ 90° Corners available
- ✓ H section and C section at set lengths



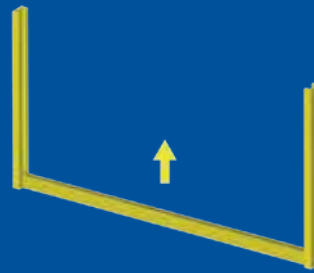
- ✓ Available in 3 colours- Charcoal, Sandstone, and Natural Grey
- ✓ Never replace fence plinths again
- ✓ Fits most colourbond type fencing systems
- ✓ Reinforced concrete for superior strength

1 INSTALL YOUR FENCE POSTS

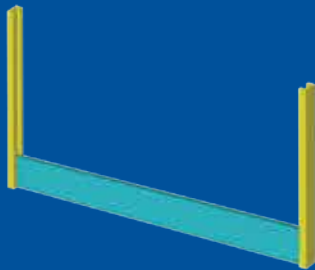
Install your fence posts as specified by the manufacturer. Outback Sleepers recommends that the post be extended and the hole dug a further 300mm deeper than the fence manufacturers recommendations.



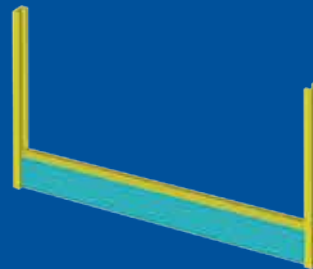
2 REMOVE BOTTOM RAIL



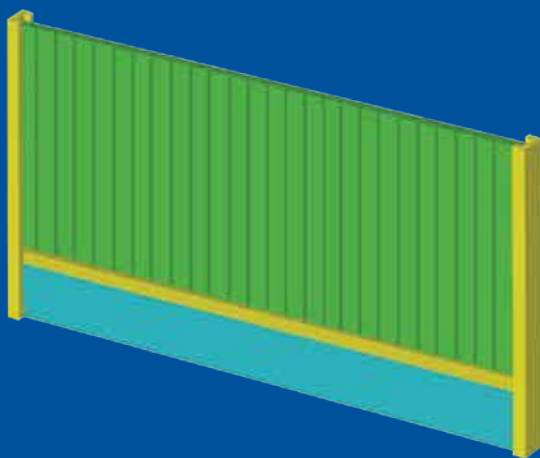
3 INSERT CONCRETE UNDER FENCE PLINTH INTO POSTS



4 REPLACE BOTTOM RAIL AS PER FENCE MANUFACTURER'S INSTRUCTIONS



5 REPLACE FENCE PANEL AS PER FENCE MANUFACTURER'S INSTRUCTIONS



AVAILABLE IN:



SANDSTONE



CHARCOAL



PLAIN GREY

*customer must confirm suitability of product use with fencing style being installed.

FACTORY

- ✓ Purpose built facility
- ✓ Technologically advanced for superior quality control
- ✓ Massive production capabilities for quick turnaround times



DELIVERY

- ✓ Dedicated delivery vehicle
- ✓ Small delivery windows to avoid downtime
- ✓ Forklift for difficult site access and exact stock positioning
- ✓ Large load capacity for commercial customers
- ✓ Smaller crane trucks available on request
- ✓ Metro and Country delivery is available
- ✓ Pick up with vehicles suitable for forklift loading welcome





ADDING DISTINCTION TO YOUR LANDSCAPE DESIGN.

Outback Sleepers offer the highest quality concrete retaining wall sleepers and precast panels, engineered to achieve wall heights in excess of 4 metres. From larger civil works projects, to landscaping works, and small retaining walls, we have designs to suit every taste and budget. As a local manufacturer we offer fast turnaround, large quantities of stock, and an efficient delivery service to site.

With a network of long term valued contractors, Outback Sleepers have the industry reputation to match and can recommend wall builders suitable for any installation.

Contact us today and our expert team will be happy to assist with your installation or delivery enquiries.

WALL DESIGN STANDARDS

For all wall construction and permit requirements, please contact your local authority for details. Typically, walls under 1.0m do not require permits, but may still need to be engineered depending on location. Our sleepers have local 1507 building code certification and are designed according to AS 3600-2009 which provides for a minimum 50 year life span.

SLEEPER SIZES

2.0m x 200mm x 75mm	Standard
2.0m x 200mm x 90mm	Heavy Duty
2.0m x 200mm x 100mm	Extra Heavy Duty
2.0m x 200mm x 120mm	Extra Extra Heavy Duty
2.4m x 200mm x 75mm	Standard
2.4m x 200mm x 90mm	Heavy Duty
2.4m x 200mm x 110mm	Extra Heavy Duty
2.4m x 200mm x 140mm	Extra Extra Heavy Duty
3.0m x 200mm x 110mm	Heavy Duty

* Other sizes available on request. Colours may vary marginally to this brochure. Not all designs available in all sizes. Please check availability at time of purchase. Thicknesses may vary with a tolerance of +3mm/ - 1mm. As with all concrete products, sleepers are subject to efflorescence and water staining. Our products are delivered in plastic wrapping. To maintain optimum colour uniformity of charcoal coloured products we would recommend plastic covering after installation for 2 weeks if rain is likely.

